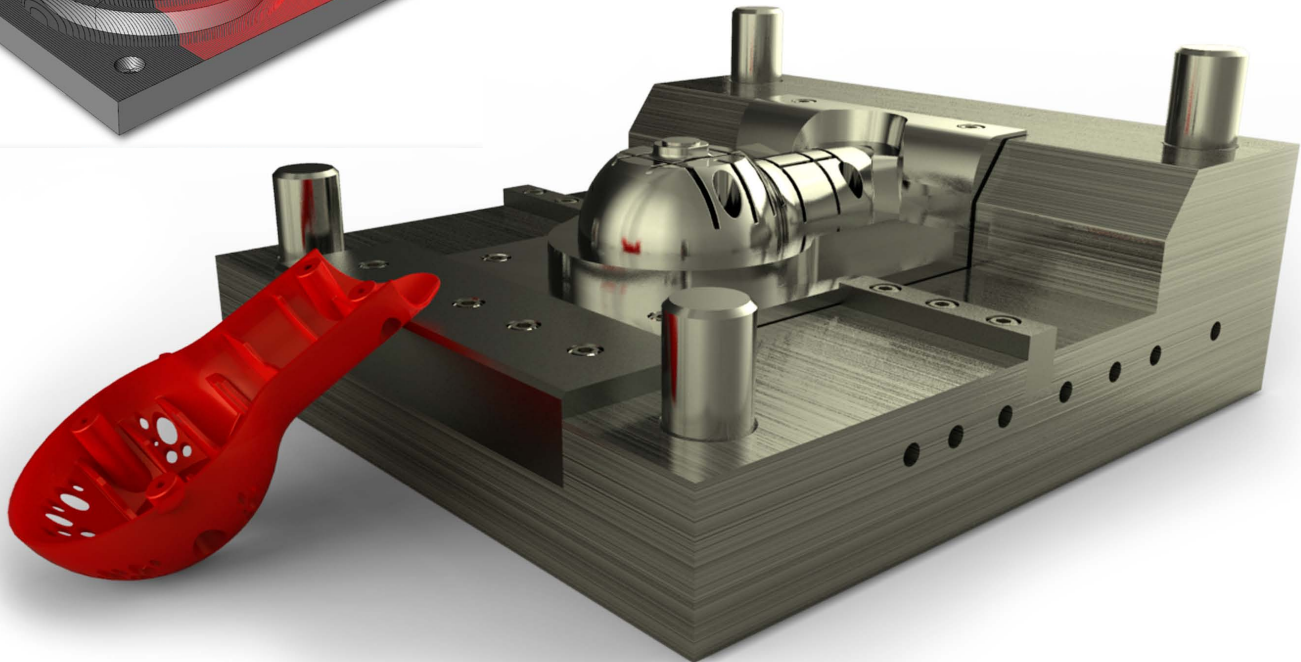
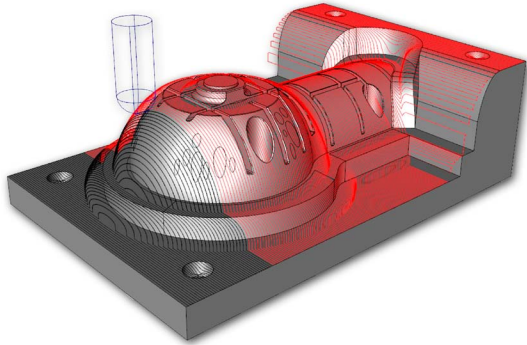


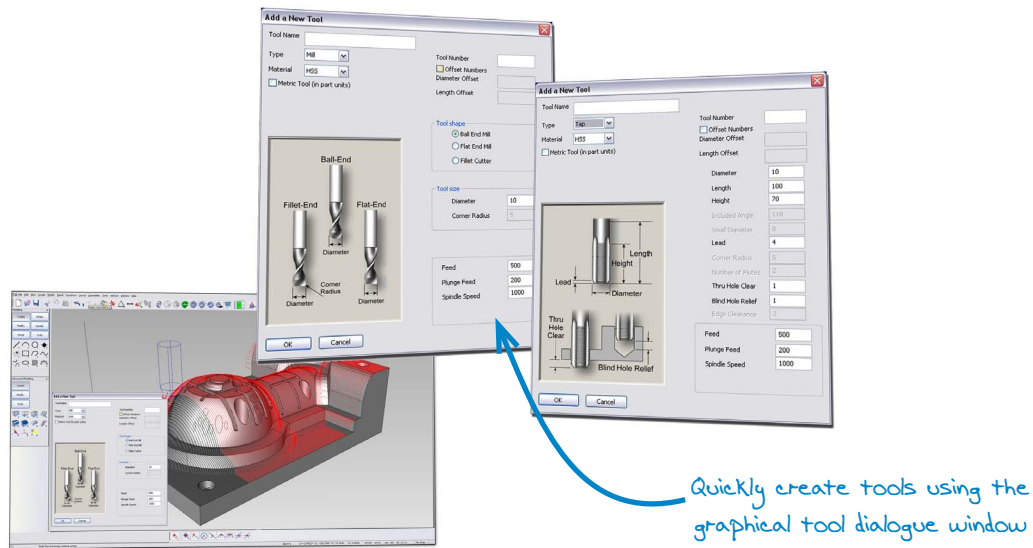
## *Economical 2 and 3 axis NC Programming*

KeyCreator Machinist - A Smooth Workflow from Modeling to Machining. KeyCreator Machinist is the easiest to use and most cost effective milling solution ideal for mold, die & tooling, wood working, rapid prototyping and general machining.



### *KeyCreator Machinist features include:*

- Fast toolpath generation
- Flexible cutting strategies
- Supports large surface, solid, or hybrid files
- Import Native CAD models or create geometry on the fly
- Tools to repair geometry, covert splines to arcs and lines
- Create or modify surfaces, wireframes, and support for detailing
- Drilling, pocketing, profiling, surface roughing and finishing cycles
- 2-axis Wire EDM toolpaths
- Toolpaths easily edited and managed with the Toolpath Organizer
- Toolpaths regenerate when geometry, tools or parameters change
- 4 axis continuous centerline motion replacing x or y axis
- 5 axis tombstone indexing
- Configurable post processors
- Toolpath Verification
- Graphical toolpath NC code verification (MetaCut Utilities)



## KeyCreator Machinist 2 Axis Capabilities

### Drilling

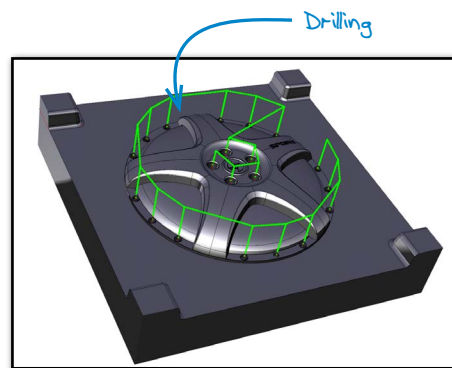
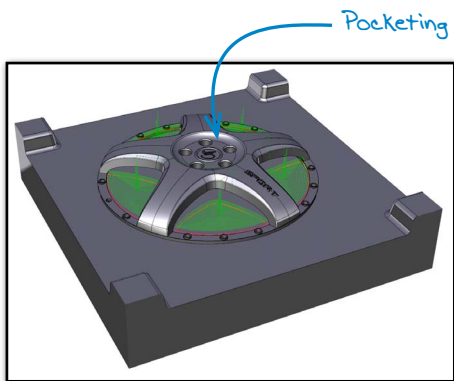
A complete solution with a full spectrum of drilling cycles. Spot, peck, boring, tapping, canned cycles and user defined.

### Profile - 2D

Comprehensive 2D Contouring including various approach & depart strategies, finishing and roughing with multiple steps in XY and Z, choice of outputting either.

### Pocketing

Generate multiple pockets in a single toolpath, with the option of defining top and depth for each contour or island.



## KeyCreator Machinist 3 Axis Roughing Capabilities

### Z-Level Contour

Create successive constant Z contour's within a selected boundary. The tool spirals or ramps down, along the contour of the next level to be machined ensuring complete material removal and smooth motions at sharp corners.

### Zig-Zag

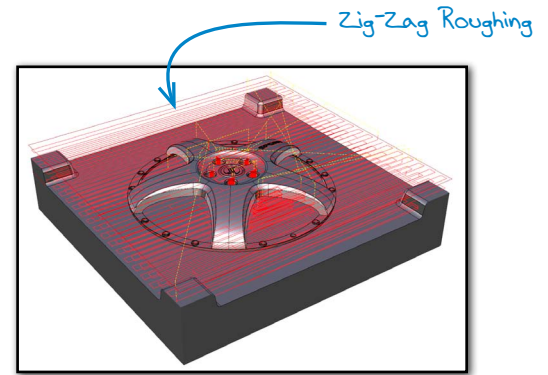
Create continuous, constant Z parallel toolpaths. The tool will rough on a Z plane until it encounters the model geometry making a perpendicular move then reverse direction. Once the Z level is completed the next level will be machined.

### Uni-Directional

Create toolpaths in one direction. The tool will rough on a Z plane until it encounters the model geometry climbing the model to the previous Z level of machining. Once the Z level is completed the next level will be machined.

### Follow Surface

The tool will rough on a Z plane until it encounters the model geometry climbing the model to the previous Z level of machining. It then rapids to the clearance plane, moves to the next position, machining down to the current machining plane.



## KeyCreator Machinist 3 Axis Finishing Capabilities

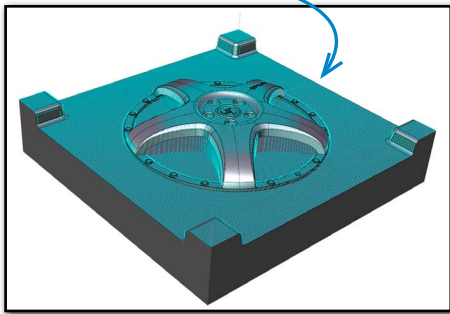
### Planar

The tool path is generated in parallel vertical planes following the contour of the geometry.

### Radial

Radial finishing creates toolpaths that radiate outward from a user defined point. Ideal for round parts.

Planar Finishing



### Plateau

The toolpath follows the contour of the part staying at a constant Z level with variable step-down based on wall steepness.

### UV Flow

Flow line machining cuts single or multiple surfaces using their natural shape to define the cutter path, delivering a smoother finish.

### Pencil Tracing

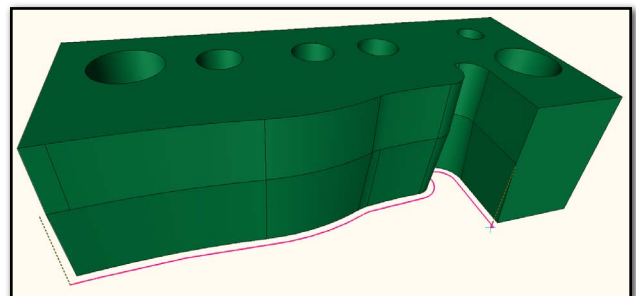
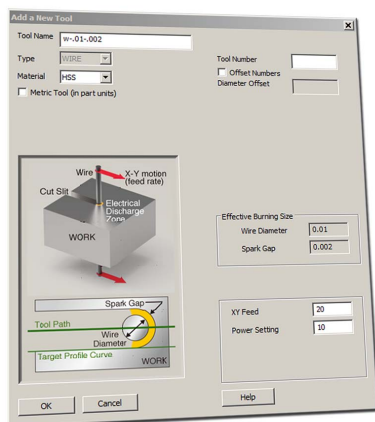
Pencil Tracing removes material from hard to reach areas along the intersection of surfaces.

### Geometry to Toolpath

Create a toolpath from 3D wireframe geometry.

## KeyCreator Machinist Wire EDM Capabilities

2-axis Wire EDM with or without constant taper  
"Turn then Burn" capability for rotary/indexing  
Open & closed profiles



- Rough & skim cuts
- Sharp, rounded, loops Cornering options
- Lead-In & Lead-out options

## KeyCreator Machinist Features

KeyCreator  
Machinist Mill 2  
Machinist Mill 3  
Machinist Wire EDM  
Metacut Utilities

Read CSV points file	X				
Splines to lines/arcs	X				
Output DXF	X				
Create tool library	X				
List and group toolpaths	X				
Review toolpath basic information	X				
Delete toolpath	X				
Generate process sheet	X				
Configurable post-processor		X	X	X	
Wireframe tool animation		X	X	X	
Copy/rotate/regenerate toolpath		X	X	X	
Curves/polylines to toolpath		X	X	X	
Points to toolpath		X	X	X	
Drilling toolpath		X	X		
Planar profile/contour toolpath		X	X		
Planar face milling toolpath		X	X		
Pocket toolpath (w/stepdown)		X	X		
Pencil trace toolpath		X	X		
Contour rough toolpath (w/ramp)			X		
Zig-zag rough toolpath (w/ramp)			X		
Uni-directional rough toolpath			X		
Follow surface rough toolpath			X		
Round rough toolpath			X		
Planar finish toolpath			X		
Radial finish toolpath			X		
Plateau mill finish toolpath			X		
UV-flow finish toolpath			X		
Round finish toolpath			X		
Morph finish toolpath			X		
2-axis Wire EDM toolpath (w/taper)				X	
Graphical toolpath verify*					X
Launch Metacut Utilities					X

\*32-bit only

### Learn More

Visit [Kubotek3D.com/Machinist](http://Kubotek3D.com/Machinist) to watch videos, read case studies, request a demo or a free trial.