



RAISE3D

PATHFINDING FLEXIBLE MANUFACTURING

WWW.RAISE3D.COM

A photograph of a modern building with a large glass facade and a balcony. The building is the background for the text.

ABOUT US

RAISE3D inspires creativity and ingenuity with innovative 3D printing technology that empowers our customers to build extraordinary things.

Our award winning 3D printers are known for their rigorous quality standards and are built specifically for the needs of our customers to be more competitive, incorporate advanced materials and large build volumes to pathfind flexible manufacturing on demand.

Our customers have come to rely upon our capabilities and trust our technological leadership in 3D printing. At RAISE3D we encourage and value new ways of thinking, invest in research and development and promote the use of new technologies.

Quality is at the heart of everything we do and customer satisfaction is our key performance indicator.



User centric organization



Exceptional user experience



Reliable workhorse machines

Raise3D Printers: An Award Winning



"The huge build volume makes so many more designs printable, and the dual high temp extruders allow us to print those big designs in any material we want."

Matt Stultz
Make Magazine



Legacy

"Great features plus integrated software and hardware put this machine at the front of the pack."

Philip J. Angileri
Make Magazine

"It works straight out of the box and is a great choice for those looking to create engineering-grade prototypes or parts on a desktop machine."

3D Hubs
Printer Guide 2018

THE NEW RAISE3D SERIES

Pro2 / Pro2 Plus

Industrial grade printer's ready to integrate print factories,
24/7 production capability and customized parts on demand.



Dual Extruder: Electronic driven lifting; 4× Increased torque performance



Massive Build Volume



0.01mm Resolution



Filament Sensor / Camera / Filter



Diverse Filament Compatibility (300°C)



32-Bit Motion Controller Board



7" Touch Screen



Print Resume after Power Outage



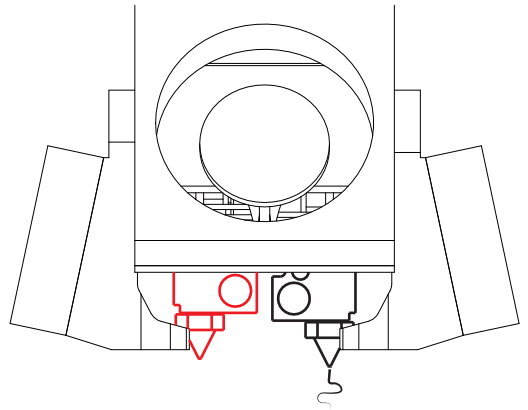
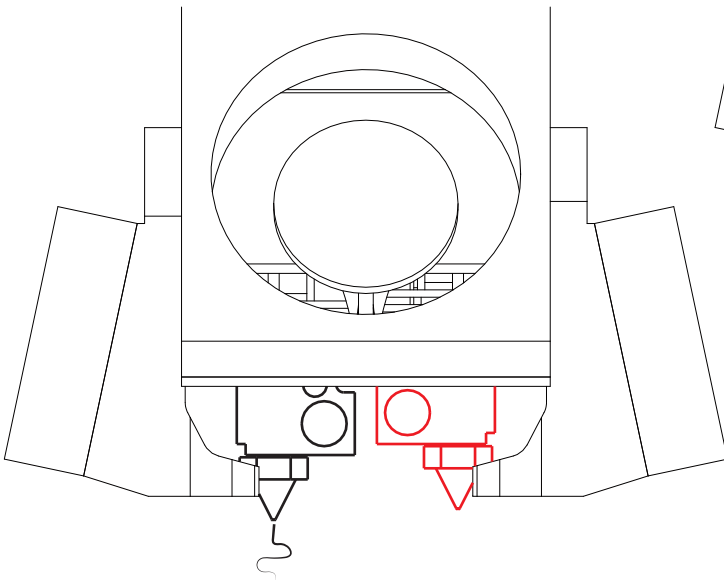
Wireless Compatibility





Electronic Driven Dual Extrusion with Retracting Nozzles

- Prints complex mechanical parts
- Supports a variety of multi-material prints
- Improves print speed



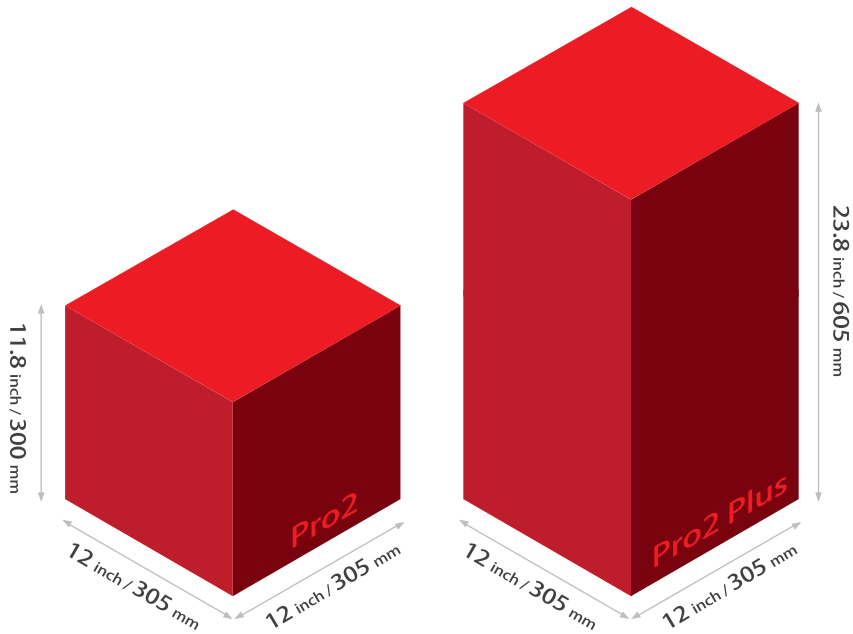


High repeatability. ($<0.005\text{m}$, 5micron).

Light speed <1 second switching time.

1.5mm lifting distance
compatible with flexible filaments.

Reliability tested over 100,000 times



Think Bigger

Up To

12×12×23.8 inch
305×305×605 mm

24/7 Reliability - Multiple Fail Safe Systems - Industrial Grade Components

For Material Compatibility up to 300°C

PLA	ABS	HIPS
PC	TPU	NYLON
TPE	ASA	PETG

Particle (wood / metal) Filled

Carbon Fiber Enforced

Flexibles



0.01mm

HIGH RESOLUTION

Unique motion system for superior part quality and resolution



Interchangeable nozzle
0.2mm nozzle for finer X/Y spot size



Unmatched layer resolution
0.01mm layer thickness



Precise positioning
0.0125mm positioning
resolution on X/Y axis

0.1mm

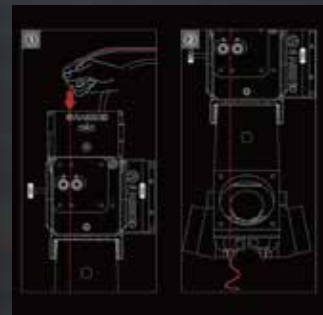
INTUITIVE USER EXPERIENCE

Visual Interface - Rapid Reviewing - Visual Print Progress - Full Adjustment Control

7-inch Touch Screen



Integrated Setting Control



On Screen Assistance



Visual Model Selection

SECOND GENERATION POWER LOSS RESUMING

Never lose a print.

Current File : test modle.gcode
Printing Progress : 60%
Printing Time : 02:50 / 03:30
Printing Height : 85%

We encountered a power loss
during last build!
You can choose one operation
from below.

recover current task

restart current task

cancel current task

*"I actually knocked off the power accidentally.
I was currently doing a 96 hour print with only 2 hours left.*

*As I raised my head to scream in terror, I turned the machine back on
and it asked me to continue the print. THIS WAS A LIFESAVER!"*

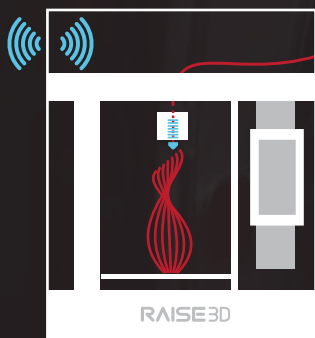
-Shon Robinson

REMOTE USER INTERFACE ACCESS - MONITOR - CONTROL

Operate efficiently with ideaMaker by connecting wirelessly to your Pro Series Printer.



Wireless Upload



Wireless Control

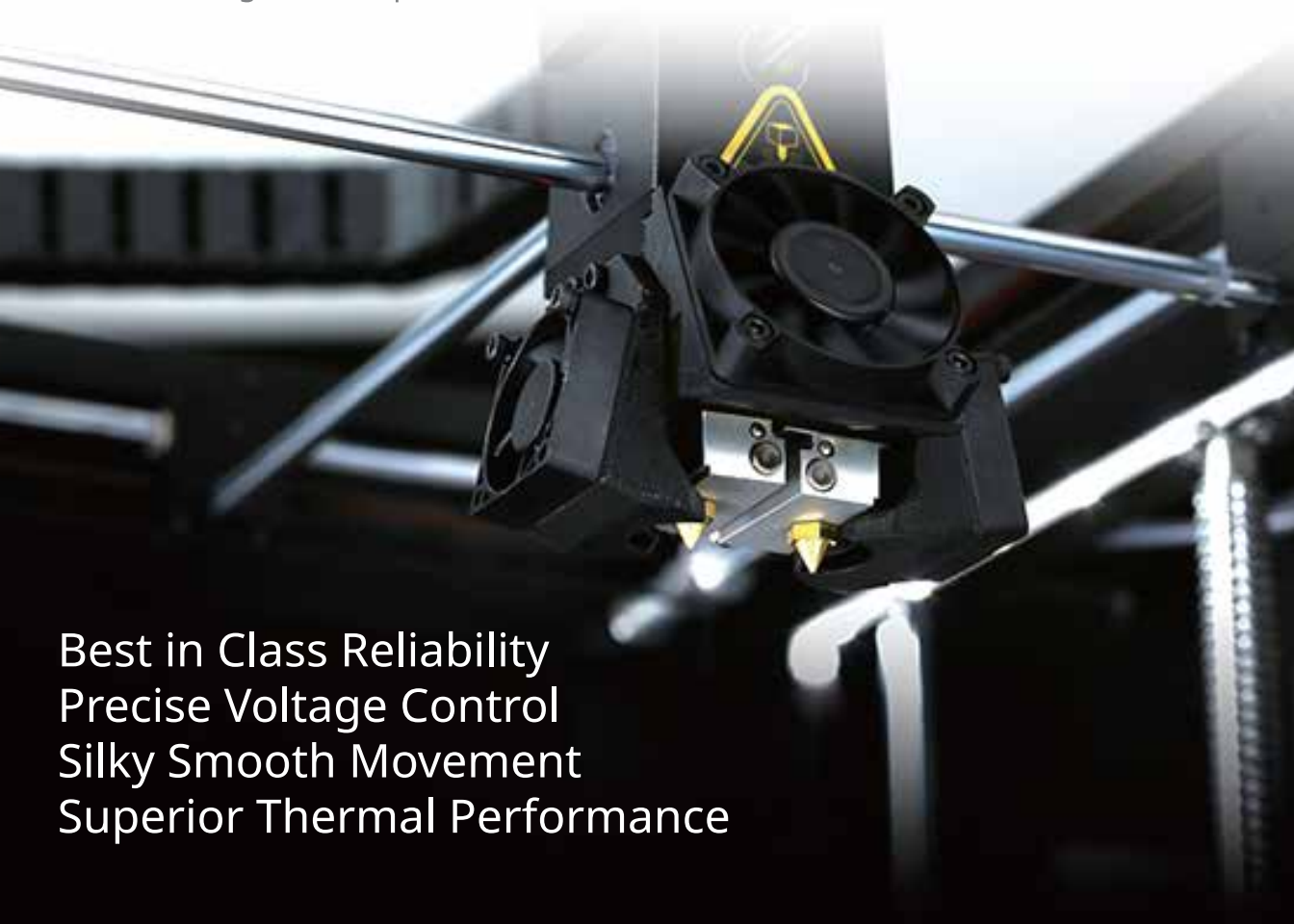


Wireless Monitoring

NEXT GENERATION MOTION CONTROLLER



- 400 MHz ARM Cortex-M7 32bit RISC FPU.
- Industrial grade components.
- Standalone motor driver.
- 256 micro-steps driver system.



Best in Class Reliability
Precise Voltage Control
Silky Smooth Movement
Superior Thermal Performance

Effortless, Dependable and Accurate
with optical run out sensors and end stops

NEW EXTRUDER WITH FILAMENT RUN-OUT SENSOR

Better Grip

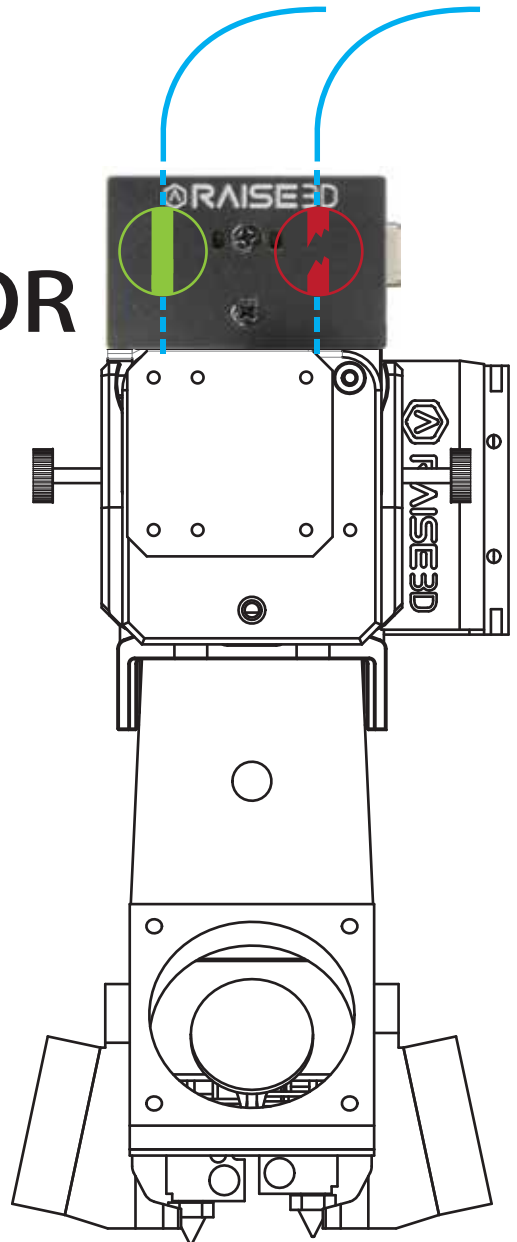
Dual gear driven.

No Slipping

Increased Performance
4x more torque

Worry-Free Prints

Optical run-out sensor



New HEPA Air Filtration



Environmentally friendly
Designed to silently remove nano-particles

NEW BUILD PLATE SYSTEM

Excellent warping prevention.
Even heat distribution.
Longer lifetime.
Steady and simple to use.



- Aerospace grade material.
- High temperature silicone heating bed.
- Magnetic hold aluminium bed.
- Improved 4+9 points lock system.

MORE FEATURES

Built-in camera.

State of the art extruders system.

Improved factory calibration.

High quality optical end stops.

Software controllable active cooling fan.

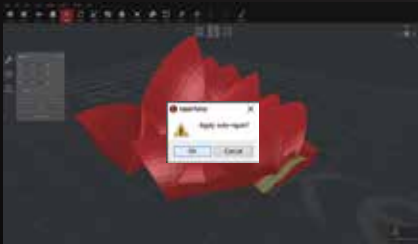
Advanced hotend.



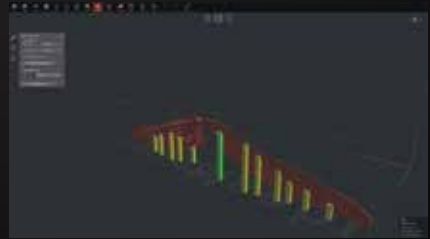
ITEM	Pro2		Pro2 Plus	
	Build Volume (W×D×H)			
	Single	Dual	Single	Dual
CONSTRUCTION	12×12×11.8 inch 305×305×300 mm	* 11×12×11.8 inch 280×305×300 mm	12×12×23.8 inch 305×305×605 mm	* 11×12×23.8 inch 280×305×605 mm
	Machine Size (W×D×H)			
	24.4×23.2×29.9 inch 620×590×760 mm		24.4×23.2×43.5 inch 620×590×1105 mm	
ELECTRICAL	Power Supply Input Power Supply Output		Universal 100-240 VAC, 50/60 Hz 600 Watts, 24 VDC	
PRINTER	Print Technology	FFF		
	Print Head	Dual-head with electronic lifting system		
	Filament Diameter	1.75mm		
	XYZ Step Size	0.78125, 0.78125, 0.078125 micron		
	Print Head Travel Speed	30 - 150 mm/s		
	Build Plate	Heated aluminum build plate with magnetic holding		
	Max Build Plate Temperature	110 °C		
	Build Plate Material	Silicone		
	Build Plate Leveling	Pre-calibrated leveling		
	Supported Materials	PLA / ABS / HIPS / PC / TPU / NYLON / TPE / FLEX / PETG / Bronze-Filled / Wood-Filled / Carbon Fiber Enforced		
	Nozzle Diameter	0.2/ 0.4/ 0.6/ 0.8mm		
	Max Nozzle Temperature	300 °C		
	Operating Sound	50 dB		
Connectivity	Wi-Fi, LAN, USB port, Live camera			
Operating Ambient Temperature	15 - 30 °C, 10 - 90% RH non-condensing			
SOFTWARE	Slicing Software	ideaMaker		
	Supported File Types	STL, OBJ		
	Supported OS	WINDOWS/ IOS/ LINUX		
	Machine Code Type	GCODE		
PRINTER CONTROLLER	User Interface	7 inch Touch Screen		
	Network	Ethernet 802.11b/g/n Wifi 2.4GHz/5GHz		
	Resume Print after Power Outage	Second Generation 1024*600		
	Screen Resolution	ATM Cortex M7.400MHZ FPU		
	Motion Controller	32 bit		
	Logic Controller	Freescale imx6, Quad core 1Ghz ARM processor		
	Memory	1GB		
	Onboard Flash	8GB		
	OS	Embedded Linux		
		Sdcard*1, Usb2.0*2, Ethernet*1		
		※ : When you are printing with dual Material.		

ideaMaker

Powerful Slicing Software



Model Repairing



Customizable manual support



Remote management



Multi-thread slicing engine (64 bit)



Speed

- Rapid and Efficient.
- Native-compiled, multi-threaded, 64-bit.

Repair

- Automated part separation for Multi-Part prints.
- Repair and optimize unprintable files.
- Cut models at any axis or angle.

Support

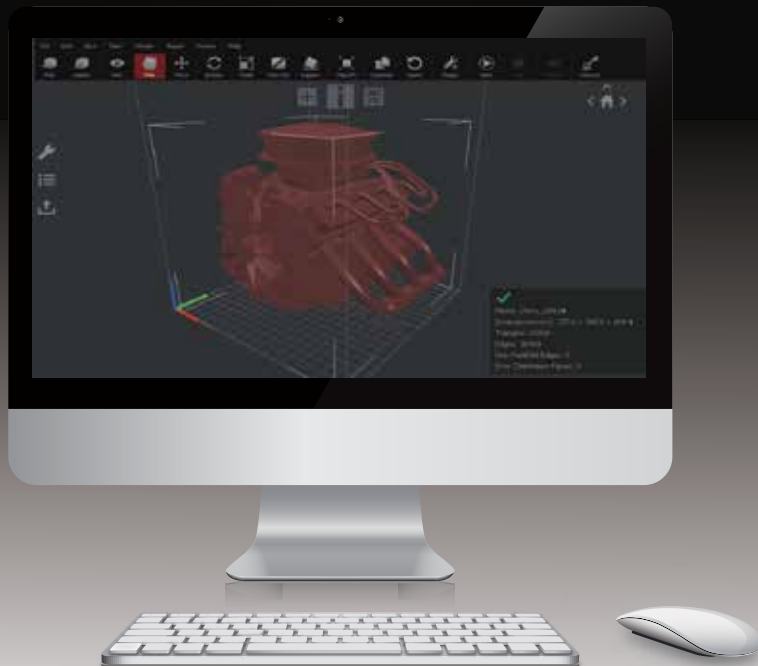
- Automatically generated supports.
- Manual support and editing features.

Optimized Interface

- Create and manage profiles to easily switch between settings.
- Cross section viewing.
- Auto-layout for multi-part printing.
- User friendly UI.
- Print in only 4 clicks.

Compatibility

- Compatible with most FFF 3D Printers
- Input OBJ/STL, Outputs GCODE
- Available in English, French, German, Russian, Japanese, Chinese, and more.







3189 Airway Ave, Unit F
Costa Mesa, CA
92626 USA
+1 888 963 9028

Stationsplein 45
Unit A4.004
3013AK Rotterdam,
Netherlands

4th Floor, B5 Building,
No. 1600 Guoquan N Rd,
Shanghai, China

inquiry@raise3d.com

